



Buckland School Newsletter

Buckland School is committed to providing quality education that engages all students fully in a wide range of learning experiences that will assist them in preparing for the challenges of the future.

Week 2 Term 1

5 February 2018

Dear Parents and Community Members

◆ Tena Koutou. What a wonderful start we have had! Thank you all for being so positive with your children about the return to school and thank you to our children who have settled in so well with school routines.

◆ **School Values for the Term:** Excellence and Respect.

◆ **Dates for 2018 Terms:** Please book holidays during holiday periods
Term 1: Wed 31 Jan – Thurs 13 April
Easter Break – Fri 30 March to Tues 3 April

Term 2: Monday 30 April – Friday 6 July

Term 3: Monday 23 July – Friday 28 September

AG Day—Saturday 29 September

Term 4: Monday 15 October – Friday 14 Dec Where-ever possible however please make trips out of school time so that your child's progress is not interrupted.

◆ **Absences:** Please notify the school early each morning that children are going to be away, stating the reason for the absence. An answer phone operates for your convenience. You can also email Mrs Mills at GMills@buckland.school.nz

◆ **Dates for the Term**—These will be placed on our school website and the Skool Loop APP after this week's Franklin Sports meeting which is on Thursday afternoon.

◆ **School Times:** School begins with a handbell at **8.55a.m.** and finishes **at 3 p.m.** Children need to arrive **before this time** so that they can be prepared for a start at 9 a.m. and do not interrupt classes that have already started. Would parents of younger children please settle children and depart on the 8.55a.m. bell. Interval is 10.10—10.30 with lunch break 12.40—1.30. The first

15 minutes of lunch are assigned to sitting down and eating. Teachers will be on duty to check that children eat their lunch. If however, you notice your child is bringing home their lunch please let us know.

◆ **Building Project—Remodelling of front rooms**—This started over the weekend and will continue for the next few weeks. The school grounds will be out of bounds from 3.30p.m. this Thursday and Friday and again over the weekend 17th & 18th February. **We will need children to be collected by 3.30p.m. on these days to ensure their safety.** Due to this, the BOT BBQ and sports afternoon will be postponed until Friday 16th February.

◆ **Swimming Lessons**—Starting this week we will be having swimming lessons for all children from professional instructors from Kelly Sports. We have been very fortunate to obtain a grant from the Grassroots Trust towards these lessons. The school has also budgeted to cover some of the shortfall. Due to the large output at the present time for stationery, etc, we will be asking parents later in the term for a donation also towards the cost of running these. These lessons will be held on Thursdays for the following rooms: Karearea, Takahe, Kereru, Ruru, Tui, and Friday for: Kea, Weka, Kakapo, Titipounamu, Piwakawaka.

◆ **Rash shirts** – Thank you to all who are wearing these to protect your skin. For others who have yet to start wearing these please do so. Naming them helps.

◆ **Naming of Clothing**—Teachers (and the Principal) are wasting time trying to work out whose clothing is whose after lunchtime and class swimming. Please ensure all your

child's clothing items are clearly named. If you have purchased second hand clothing this needs to be named also.

◆ **Hats**—The majority of children are wearing their hats during intervals. Thanks to parents for ensuring they all have one.

◆ **Lunchtime swims**—Will be available. The timetable is as follows—children in these rooms have priority:
Mondays—Karearea/Weka/Ruru
Tues—Tui/Takahe/Titipounamu,
Wed—Kea/Kakapo/Piwakawaka,
Thurs—Weka/Kakapo/Kea,
Fri—Kereru/Ruru/Karearea. If there is sufficient safe numbers other children will be invited by the duty teacher. (This timetable allows for all students to have a swim once our swimming lessons start.)

◆ **After School Swims** for families will begin next week—12th February. Parents will need to inform the office that they wish to use the pool prior to lunchtime so the cover is left off. Rules for using the pool will be communicated in next week's newsletter.

◆ **Graze School Lunches** — **Thursdays.** Some new items are on the menu. Visit <http://www.grazefood.co.nz> On-line orders must be in before 8 p.m. on the night before. A menu is on the following page.

◆ **Safety at the School Gate**—Children will assemble at the front of the school for pickup. Please come onto the grounds to collect your children. The patrolled crossings **must** be used to ensure the safety of all children. We run a Walking School Bus thanks to our wonderful parent volunteers. If you would like your child/ren to use this please contact Mrs Fletcher. Any walkers who cross over Buckland Road and the train crossing must join our walking school bus and wait near the front gate. Parents must take responsibility for these crossings in the mornings.

www.buckland.school.nz

Adults need to be good role models for children please. Also **no parking over our neighbours' driveways** and in the bus bay (until minibuses have left) please.

- ◆ **Congratulations to** Mr & Mrs Reddish on the safe arrival of Hayley Grace. A sister for Carter.
- ◆ **EOTC Weeks and Camps**—Due to the reorganisation of our school this year we will be holding separate EOTC Weeks for Yr 1 & 2 and Yr 3 & 4. Yr 1 & 2s EOTC week will be 19th—23 February. Notes will come home today with this newsletter. Yr 3 & 4 will have theirs early in Term 2. Year 5 will be going to Willow Park at Eastern Beach 28-30 November. Yr 6 & 7 will be going to Kawau Island 12-16 November. Year 8 Camp is yet to be decided.
- ◆ **Homework Procedures**—As you will be aware there has been lots in the news lately about homework both the positive and negative aspects of children doing homework. Our school procedures state that homework is optional and at the discretion of parents and caregivers. If you do not wish your child to do homework that is allocated please inform their teacher. The full procedure is on the website.
- ◆ **School App**—you may have noticed the Parent Teacher Calendar App is now called The Skool Loop App. It is the same app with a smart new look.

- ◆ **Uniform Shop Hours this week**—due to tomorrow being a public holiday, the volunteers from the Uniform Shop have put on extra hours this week. The shop will be open this afternoon from 2.45pm to 3.30pm and again this Wednesday from 2.45 pm to 3.30pm. Normal hours will recommence next week—Tuesdays from 8.30am to 9.15am. Parents are reminded that orders can be placed in the locked drawer in the office foyer during the week and will be made up and ready for collection from the office after the following Tuesday morning.
- ◆ **Nits**—we have been advised that nits are back in the school. Please be vigilant and check all your children's hair. A chemist can provide advice on the best treatment.

Thank You to:

- ◆ Parents who have bought stationery and paid school donations and fees.

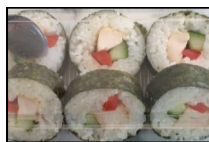
GUITAR TUITION

Guitar tutor, Renton Brown will be working at school again this year. Information brochures (including enrolment/permission slips and payment information) are available from the noticeboard in the office. Please note—tuition is available for students in Years 4-8 who are aged eight or older. Students continuing from last year need to re-enrol. Limited spaces available.



Graze School Lunches - Menu

Popcorn	\$1.50
Ham & Cheese Pinwheel	\$2.00
Chocolate Brownie	\$2.50
Giant Chocolate Chip Cookie	\$2.50
Pizza Bun	\$3.50
Ham Sandwich	\$4.00
Wholesome Mince & Cheese Pie	\$5.00
Mac and Cheese	\$5.00
Sushi 6 chicken and vege	\$5.50
Sushi 8 chicken and vege	\$7.50
Sushi 6 tuna	\$5.50
Sushi 8 tuna	\$7.50
Sushi 6 mixed	\$5.50
Sushi 8 mixed	\$7.50



Events for This Week

- Mon 5 Feb—School open
- Tues 6 Feb—Waitangi Day—School Closed
- Wed 7 Feb—Yr 7 & 8 Technology at Pukekohe Intermediate. Bus leaves at 8.45a.m.
- Thurs 8 & Fri 9 School grounds closed from 3.30p.m.
- Fri 9 Feb—First School Assembly 2.15p.m. All Welcome
- Saturday 10 & Sun 11 School grounds closed

Events for Next Week

- Wed 14 Feb—School Council meeting
- Wed 14 Feb—BOT Meeting 6p.m.
- Thurs 15 Feb—Parent Meetings—after school
- Fri 16 Feb—BOT BBQ, Swim and Sports Get Together—5 p.m.

Community Notices

BUCKLAND NETBALL CLUB - Registrations will be held after school this week on Weds, Thurs & Friday in front of Tui Room (old Room 4). We are looking to start a new Year 3 team for Friday nights and also have some spaces for Year 4,5,6 & 7 players. All new players welcome. Existing players to also come and fill in a 2018 registration form.

WISE OWL EARLY LEARNING CENTRE—UNDER NEW MANAGEMENT Anette Blair is the new owner, and enrolling now! Warm nurturing, home-like care and education. 49 John Street, Pukekohe—Phone 238 6370 www.wiseowlc.co.nz/info@wiseowlc.co.nz

THE FLASH BANG SCIENCE CLUB – AFTER-SCHOOL CLASSES ARE BACK!!! (7yrs-12yrs) Open for bookings now and filling fast! Inspire your curious kids with practical, hands on experiments in a fun creative environment. TERM 1 class is in PUKEKOHE on Mondays 4.30-6pm starting in 2 weeks so still time to book. For more information and bookings please check out www.flashbangscienceclub.co.nz or email: admin@flashbangscienceclub.co.nz.



Wednesdays 7pm - 9pm, starts 7th Feb

TWILIGHT SOCIAL TEAM COMPETITION

Contact Cherie Arnet 027 4596075
\$240 team of 4 or enter individually \$60

HAVE YOU DOWNLOADED OUR SCHOOL APP YET?

NEVER MISS IMPORTANT SCHOOL INFORMATION AGAIN!



- * Events
- * Notices
- * Notification
- * Absentee
- * Newsletters
- * Permission Slips



Simple free download: In the Play Store and App Store search 'Skool Loop NZ' and choose our school once installed.

