

Agricultural Day 2023

Takahe & Tui Information Sheet

Our theme for Ag Day this year is...



Tamariki have been very busy in class making all sorts of **SPACE** art that we are looking forward to sharing with you on Ag Day - Saturday 23rd September.

Each child will create 8 indoor exhibits. These will be displayed in each child's classroom and will be judged by independent people prior to Ag Day. The exhibits will be available for viewing on Ag Day when classrooms open at 11:00am on the day.

To help us complete our indoor exhibits one of the baking items is required to be made at home, and one of the floral exhibits that is made at school will use resources that are sourced and brought from home. Details about what these two exhibits require are on the next page. Please send any items from home in a clearly named bag or container by the indicated due dates.

Visual Art Exhibits: All three of these pieces will be created at school.

Baking Exhibits: One piece of baking will be made at school prior to Ag Day. The other will need to be made and assembled at home, then brought to school on Friday 22nd September.

Floral Exhibits: All three floral exhibits will be made at school with some items required to be bought from home for one of them.

Alien Themed Cupcakes



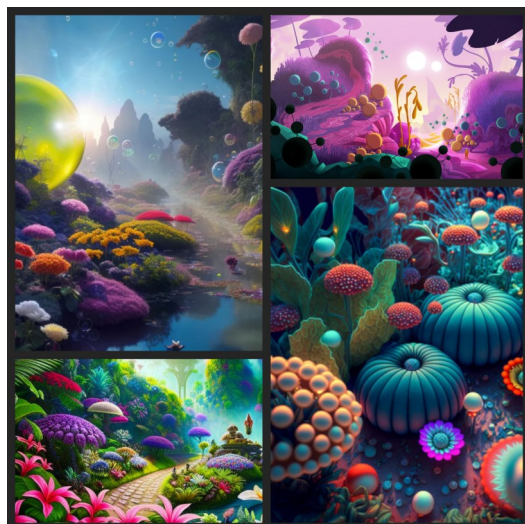
Each child will need to bring one cupcake decorated in an alien theme. This must be created at home and brought to school fully assembled.

You can either bake or buy a pre-made cupcake to decorate.

To decorate this cupcake use icing, fondant, and any other decorations you need to help make your alien creation. This is your chance to be creative!

Alien cupcakes must be brought to school on **Friday 22nd September** in a clearly named container.

Alien Planet Themed Miniature Garden



Each child will create a miniature garden that might be found on an alien planet.

Please send the following items to school in a named container. This garden **must** be created at school so please do not send any items pre-assembled. It could be a good idea to bring in a drawing or inspiration pictures to help with creating the alien garden at school.

Please bring:

- A tray no bigger than 30cm x 50cm.
- A selection of flowers and greenery - the more alien looking the better! These can be fresh or dried.
- A selection of unique items to make your garden look like it belongs on an alien planet ie, painted rocks, beads, marbles.

The following items will be available at school:

- *Clay aliens (children to make and paint)*
- *Pipe cleaners, coloured pom poms, googly eyes, wool, cellophane, tin foil, other assortment of craft items.*

All items must be brought to school by **Friday 22nd September**.

Thank you for our support! Please let us know if you have any questions.

Takahe - Mrs Brachi - jbrachi@buckland.school.nz Tui - Miss Hari - nhari@buckland.school.nz